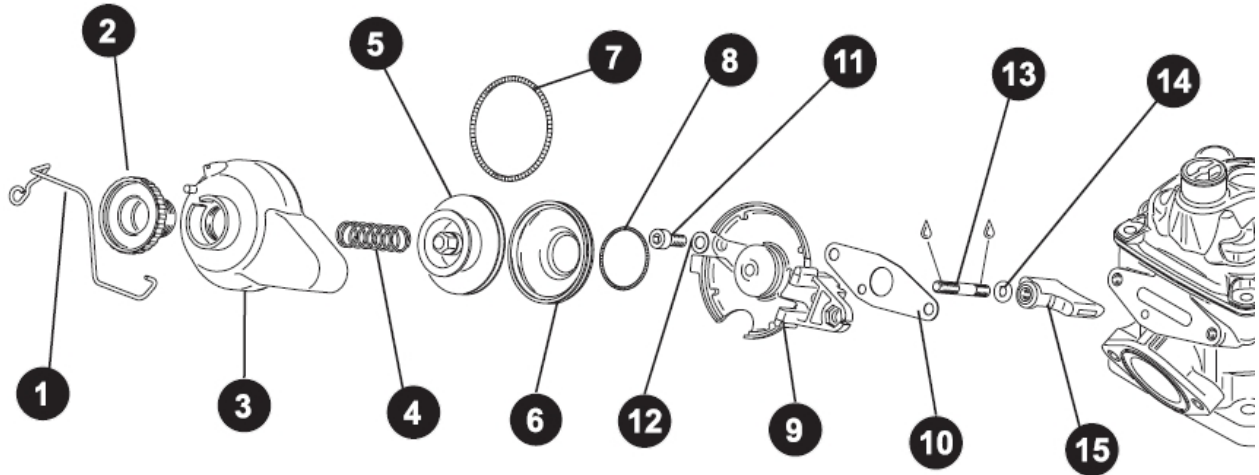


The Rotax Power Valve (PV)



All PV systems vary the duration of the exhaust port open time, which gives the engine usable low end power combined with excellent top end power. This is of course the reason why most gearbox karts blank off their PV's as with the use of a gearbox the engine will always be in the rev range of the open PV position. The PV in the Rotax Max effectively operates in 2 positions - closed and open.

With the PV closed, the engine produces a good low speed torque/power curves that drop off rapidly just above 7500rpm. With the PV open, the engine produces a good high speed torque/power curves that drop off rapidly just below 7500rpm. So in simple terms if you want to use your engine at 7500rpm and below then the PV must be closed and conversely if you want good torque and power above 7500rpm then the PV must be open. However it must be remembered that adjusting the PV spring pressure by turning the red knob(2), spring pressure, adjuster on top of the PV cover does not alter the torque/power curves, it simply alters the engine speed at which the PV changes position, thus switching between the curves.

If the adjuster(2) is set too far out, the spring compression force will be low and the valve will open at too low an engine speed, giving a torque/power dip below 7500rpm. Similarly, if the adjuster (2) is set too far in, the spring compression force will be too great, giving a torque/power dip above 7500rpm. See page 98 of the Rotax Max Operators manual.

When the PV is adjusted correctly the change over between the two torque/power curves should be seamless as this setting will give the overall best performance. If you have adjusted your PV to a position where you are able to notice a dramatic change in the torque/power curve then this adjustment is wrong and you need to re-adjust your PV spring pressure to a position where the change is hardly noticeable to the driver.

The most common symptoms which may cause poor performance from the PV are:

Lack of bottom end power:

Either the valve is stuck open, or the spring is too short or soft for the setting you are using. Check for correct operation, or screw the adjuster in to adjust the revs at which the PV opens. Also incorrect driver technique can also cause a BOG see below.

Lack of top end power:

The bellows are leaking, the valve is stuck closed, or the adjuster (2) is screwed too far in.

If your engine has been popping, check that the bellows (6) has not blown off the piston (5). The sudden rise in exhaust pressure caused by the popping (exploding of unburned fuel in the pipe) may be sufficient to blow the bellows (6) off. Which will cause the power valve to not open fully and will result in loss of top end performance, however the new green bellows (6) are not prone to this problem.

Never be tempted to stretch the PV springs (4), always screw the adjuster in or out to change the revs at which the PV opens and closes. If you stretch the spring (4) it changes the spring characteristics, then you are only guessing. The PV spring adjustment can cause big losses of power if not set correctly.

Clean the PV blade (15) after every race to ensure that it always moves freely in its slot, always checking for correct alignment of the PV sealing gasket (10).

Don't forget that the ignition timing curve takes a sharp dive to 20° after TDC at around 12,500 RPM and acceleration from then on only get slower. If you are coming out of a corner above 12,500 RPM and you are not already accelerating you will not get any faster. In this situation reduce the axle sprocket by 1 or 2 teeth. As the more acceleration you have when you reach 12,500 RPM the more likely you are to reach higher speed ultimately.

An import final note regarding driving the Rotax Max with a PV fitted, as explained above the exhaust valve position is controlled by the amount of backpressure in the exhaust pipe, to ensure design performance your must always check that you have a good seal at the exhaust header ball joint with the pipe, especially after having changed the rear sprocket/chain tension or otherwise moved the engine on its mount.

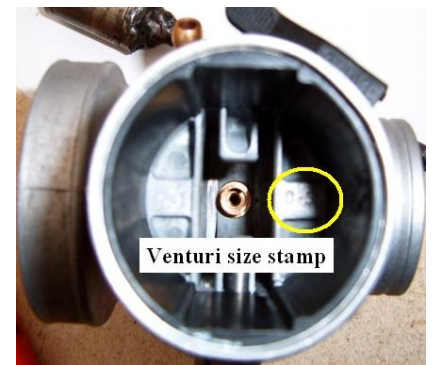
Remember also that it is possible at some tracks depending on the layout and driver style when you are off the throttle, braking for a corner to reduce pressure in the exhaust chamber causing the exhaust valve to close, lowering the effective exhaust port height while engine RPM is still above 7,500 RPM.

Now (and this is the important bit!) when you come back on the throttle if the engine revs are greater than 7,500 with the exhaust valve closed this will cause a considerable lag in engine response, the classic BOG, to prevent this from happening in the first place always use some throttle while braking which will maintain exhaust pipe backpressure sufficient to maintain the PV in the open position, however not too much as excessive power braking will kill your clutch! This symptom is the main reason why you may have seen many of the factory KFI/2 teams now fit a power valve sensor to monitor the PV position during test and race track sessions.

The Preparation and Jetting of the Rotax Max Carburettor

Carburettor Types

The Rotax carburettor is available in two different models, the VHSB 34 QD or QS; the only difference between these being the QS has the idle speed and airscrew adjusters on the opposite side of the carburettor. However, of greater significance is the fact that each carburettor can have either a 12.5 or 8.5 venturi insert. The venturi is available as a replacement part therefore the QD or the QS could be converted.



The physical difference between the two venturi types is simply that the 12.5 venturi insert has a larger progression port than the 8.5 insert thus when using a 12.5 venturi insert you will have a richer mixture in the progression phase of your carburettors throttle opening than when using an 8.5. It is interesting to note that the progression hole serves a dual purpose when the engine is idling air flows into the progression hole thus weakening the fuel mixture at idle and as the throttle is opened then the flow reverses and fuel from the idle circuit flows out of the progression port thus making the mixture richer. Now the general wisdom is that more power equals more air/fuel mixture burned in the cylinder and therefore you may ask "why would I not always use the 12.5 type".

Well the answer to this question is that all changes are designed to improve some aspect of the engine's performance, but will impact other areas, for instance a smaller carburettor will give better acceleration and therefore in selecting a choke size you should always balance your power and acceleration requirements. So for a track with long straights and few slow twisty bits the 12.5 may be ideal whilst the 8.5 would be better suited to a slower tighter track. Testing is the only answer; I would however strongly recommend that you have both types available in your toolbox.

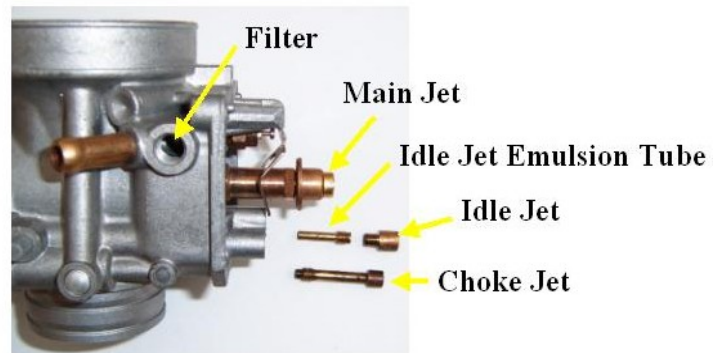
Carburettor Race Preparation

The most important aspect of race preparation is cleanliness and I really mean surgical cleanliness. The carburettor body is made with many tiny internal passages and some of the various jets have very small holes, all of which need to be maintained scrupulously clean for the carburettor to perform as it was designed.

Following each weekends racing or each days racing if carb problems are encountered, start by unscrewing the carb top and removing the slide spring, slide and tapered needle. Then remove the carb from the engine and carefully drain the fuel from the float bowl into a suitable container.

Remove the float bowl, the main jet, choke and idle jets then carefully unscrew the idle jet emulsion tube from the threaded hole below the idle jet. Remove the fuel inlet filter and check its condition.

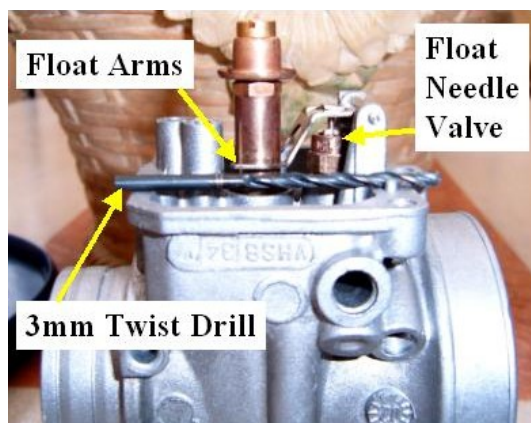
Also remove the air screw and the throttle stop screw.



At this stage I place the carb body and parts in an ultrasonic cleaner and leave it for a full cleaning cycle at 80C, however if you do not have one then use a good carb cleaning aerosol, followed by a careful blast clean of all passages and jets with compressed air. Take care to use safety goggles, as an eye full of solvent is, as I can testify very painful indeed.

Re-assembly and adjustment

You are now ready to re-assemble your carb, first replace the fuel inlet filter and tighten the 12mm cap ensuring that the fibre washer is in good condition to prevent any leaks. Carefully replace the air screw turning fully in (not too tightly or you may damage the tapered seat) and then turning out 2 turns, you will later adjust this screw with the engine running on fast idle (400rpm) simply slowly turn out the screw from this initial position up to a further 1 ½ turns (anti-clockwise) until the fastest idle speed is obtained (setting range 2 to 3 ½ turns anti clockwise from fully in).



Replace the throttle stop screw, again gently turning fully in and then backing out ½ a turn. Next place the carb body upright on a level surface as illustrated to the left. Place a 3mm twist drill onto the carb body and adjust the float arms until level and parallel with the top of the twist drill. Repeat this process for the other arm of the float lever. The level of the floats can be adjusted to other measurements (see below) but 3mm is my recommended starting point and should always be using for running in a fresh engine. It is worthwhile noting at this point that a constant level in the float camber is vital to the consistent performance of the carb, in maintaining the correct fuel/air mixture across the throttle opening range. To

ensure this correct operation, the floats must be in good condition (always check that they are not leaking & replace if not sure) and able to move freely on their guides. The float needle valve must cut off the pumped fuel flow when closed, this can be checked by using a carb pop-off pressure gauge on the fuel pipe connection, pump up to 3 psi with the float levers gently held down and watch for any leaks, again if in any doubt replace the float needle valve assembly. The rules dictate the size of float needle valve so all we can do is to ensure it is always working as designed. Now replace the idle and choke jets, taking care not to over tighten the idle jet emulsion tube, check the float bowl gasket condition and replace if necessary, carefully re-fit the floats and float bowl (don't forget your Italian "Alto" means top).



Now at this stage in an effort to maintain carb cleanliness and not undo this careful preparation, I always wrap my re-built carbs in cling film and then a soft clean rag to protect against knocks, only refitting to the engine on race day. This practice I find also helps to eliminate any condensation issues with warm carbs then stored in a cold garage. That said a good carb should always be kept warm under your pillow!

Because we are restricted by the rules to use only the 5.2 gram or 3.6 gram floats and are not able to use the alternatives manufactured by Dellorto we have to adjust the float heights by carefully bending the float arms to simulate the other floats if we believe this may be required to enhance performance. However if you chose to take this route in testing please ensure you use a catch tank on the fuel bowl vent pipes, so that the proper operation of float needle valve can be checked, as adjustment outside the normal range may sometimes jam open this valve flooding the carb and without a catch tank fitted this may not be readily detected.

Why change the float heights? Well, a lower fuel level will weaken the fuel/air mixture across the entire operating range, conversely a higher fuel level enriches the air/fuel mixture across the entire operating range you will find this is a very useful tuning tool. The standard setting for most Dellorto carburetors is 6mm but you need to experiment with these settings to find the optimum, as I say above I have found that 3mm is a good starting point for the Rotax Max but you may well find with experimentation a better setting that will suit your individual carb and engine.

It is also worthwhile at this point to mention the Mikuni fuel pump used in the Rotax classes, this pump is not the strongest pump of the Mikuni range and as such may let you down by not maintaining the correct float chamber fuel level if not properly prepared. I rebuild my pumps prior to each race meeting (carrying a spare in my toolbox wrapped in cling film and a rag as with the carb) this is a simple process to complete and is a worthwhile precaution. Don't forget the simple check is that if the fuel can run back through the pump towards the fuel tank then its time for a rebuild.

Jetting Theory

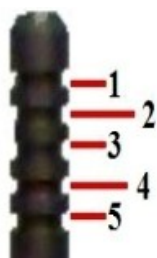
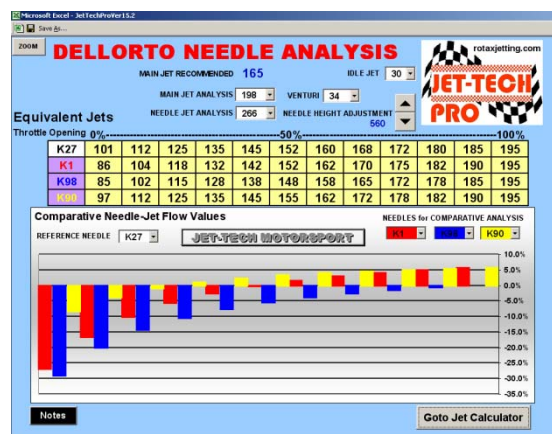
Now at the perfect air/fuel ratio (for petrol) of 14.7 to 1 (measured by mass) all of the fuel and oxygen molecules are burned in the combustion process. However whilst this ratio may keep the environmentalists happy we are seeking the maximum power and torque from our engines, this will be found at a ratio of around 12.8 to 1. However given that we are using 2% oil in our fuel we need to remove 2% from the air side of this equation. This would give an approximate target air/fuel ratio of 12.5 to 1.

Keeping a two-stroke at optimum power requires frequent jetting changes as the atmospheric conditions change. As the temperature, barometric pressure, or relative humidity change; the relative amount of oxygen in a given volume of air changes. Because the engine ingests a fixed volume of air per cycle, the amount of oxygen available per cycle varies with the weather. To maintain the optimum air/fuel ratio, we must adjust the jets and needle position in the carburettor.

In the Rotax class we have two needles available the K27 and the K98 these needles have different characteristics determined by their dimensions. The needle in combination with the needle jet control the air/fuel ratio from $\frac{1}{4}$ to $\frac{3}{4}$ throttle opening independent of the main jet selection. This is of course provided that the main jet selected is larger in area than the area between the needle-jet and the selected needle tip. In the case of the Rotax classes using the FN 266 needle-jet and a K27 or K98 needle this would be a minimum main jet size of less than 100, above which the needle and needle-jet would function as designed by Dellorto. However it must be recognised that the overall equivalent

jetting in the needle operating range is somewhat above this main jet equivalent as the fuel flows from all of the other circuits in the carb body at the same time as the needle operates.

This is illustrated here on the right with a screen shot from my needle comparison software. You can see clearly the progressive jet equivalents provided by the needle-jet / needle combination using a FN 266 needle-jet and 165 main jet setting. Whilst I have designed this software with a database containing the full range of 'K' series needles used by other classes, it does serve to illustrate the effects of both the K98 and K27 needles at the 165 main jet selection.



So to summarise in the range $\frac{1}{4}$ to $\frac{3}{4}$ throttle opening for the Rotax classes your main adjustment is the needle clip position, clip 1 being the weakness setting and clip 5 being the richest setting. A change in clip position will change the mixture strength in this vital operating range, a quick analysis of your data from any track session will tell you that this range is possibly 70% to 90% of your track time, and an area in which most gains are to be made.

A quick word here on jetting software, any software that gives the needle position as a simple progression as air temperature rises from say a main jet of 162 at P4 then 162/P3 then 162/P2 then 162/P1 and then changes to 160/P4, is to put it simply WRONG and must not be used by any serious engine tuner to maintain optimum jetting.

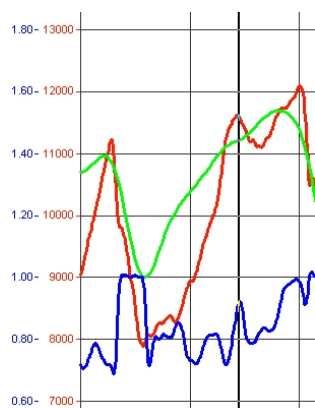
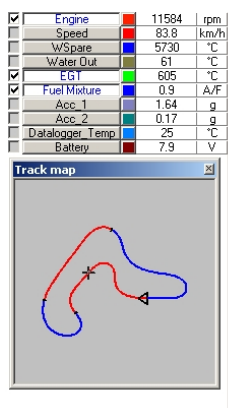
So having learned the theory lets try to put it into practice!

Just before we do first you must learn to drive the carb, every time the throttle is opened suddenly, the air speed in the choke barrel drops. In two-stroke engines this does not normally upset good engine running, but in a Rotax because of the relatively large choke size at 34mm, this drop in air speed may for moment cause the atomiser to deliver insufficient fuel, so do not snap open the throttle, it is not the on/off switch of say a Formula A engine, in a Rotax its more of a quick press of the throttle, than a stamp. However you will quickly learn this technique and with optimum jetting it can all but be eliminated.

Jetting Practice

If you have carefully followed my preparation advice above then 90% of the work is done and you simply have to fine tune your setup. **Do not undo this preparation by using unfiltered fuel.** Before you unwrap your carb from its cling film to fit it onto the engine, first check the condition of your reed petals and throat opening of your reed valve cage, if however you are running a Junior or Mini Max you will have to trust that your engine builder has done the business for you. Please ensure that the reed valve is replaced and the bolts tightened as any air leaks here will surely end in a seize with the costs of a rebuild adding to your troubles.

In developing my Jetting and Kart Set-up Software I used a Datalogger to record real-time exhaust gas temperature and exhaust gas oxygen levels, whilst both track testing and running on a Dyno, to map the performance and effect of various carb settings.



A typical data plot is included here to illustrate the levels of information that with a little effort can be obtained. You will note that in this instance the Air Fuel Ratio (the blue trace) is being recorded as a Lambda value. For those of you that are eagle eyed you will also notice that at this point the air/fuel mixture was dangerously lean, but this was a test session to investigate this very area of the carbs performance and jetting envelope.

However the best datalogger and the only one that counts at the end of the day is the stopwatch and with this simple tool coupled with some level of driver feedback, the optimum jetting can be arrived at by most competent drivers. It is important that you record the changes you make to the jetting and carb setup and at least, the changes to the air temperature at the time of the jetting or carb setup change.

So for a typical British summers day of say 15C, for a Senior Max start with a main jet of 165 and a K27 needle at clip 2 (165/P2), for Junior Max 162/P2 and for a Mini Max 148/P2. Go out and gently bring the engine (50-60C) and tyres up to temperature before putting in some quick laps. If the engine hesitates and misfires below half maximum revs then the main jet is too rich if the engine misfires above $\frac{3}{4}$ of maximum revs (with the correct gearing) then you are too lean.

A quick check of the piston crown will also help if its black and wet you are too rich, black and dry spot on, any lighter colour then you may be too lean. I also like to check the exhaust header colour, which should be as illustrated here.



Jet-Tech Motorsport



www.rotaxjetting.com

Come in, change to the next appropriate jet, record the air temperature and go out to test some more. You will quickly arrive, using this process, at the optimum main jet for the current conditions, when you do record your setup and the air temperature for future reference. Another method used to check the main jet is to slowly lift the carb choke lever as you are driving down the straight, if the engine slows you are too rich if it picks up you are too lean. Now having found the correct main jet repeat this process for the needle clip position again recording the settings and air temperature as above. You will find by using this simple process each time you visit the track you will start to build your own database of air temperature versus jetting from which you will be able to better predict the jetting required on a particular day. However I have to say good jetting software will make your life a lot easier, allowing valuable time to concentrate on setting up your chassis and tyre combination.

A final word, all engines need fuel to make power and jetting leaner may not always be the way to go. It may sometimes be your selection of spark plug that is wrong and not your jetting selection. This is often true in the colder months when you may well benefit from using a hotter plug type, such as the BR8 EG, however be careful with this one as hot plugs and lean jetting quickly lead to engine damage.

Be fast and stay safe

John Savage is the Author of Jet-Tech - *The Ultimate Jetting & Kart Set-up Software*, which is designed for the entire Dellorto range of carburettors and is available on CDROM from rotaxjetting.com

All email enquires should be addressed to Colin at info@rotaxjetting.com